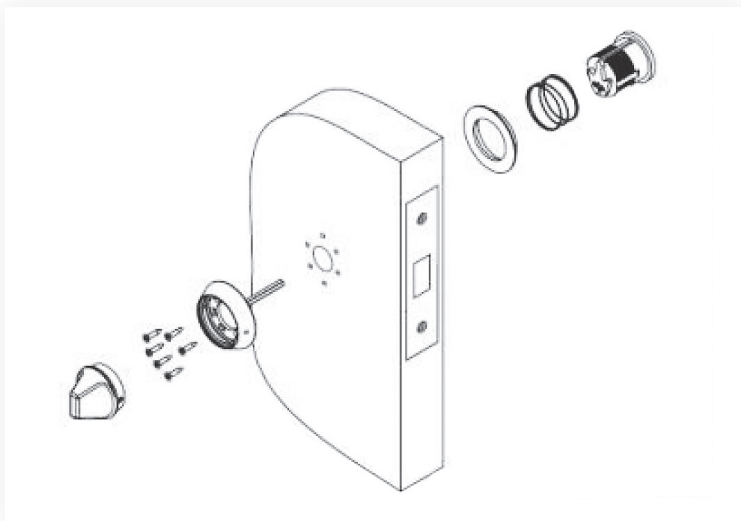




DEADBOLT WITH LIGATURE RESISTANT THUMB TURN

#DH435

Heavy duty commercial quality deadbolt that provides a positive deterrent to forced entry. The health safety thumb turn design enhances the opportunity to reduce accidents in health care facilities, detention centers and potential high risk areas. It is also designed to be an integral part of your Accident Prevental and Safety Program. Schlage® C keyway, standard Small Format 6- or 7-pin Interchangeable Core (SFIC) available. 32 D finish. ADA Turn piece available.



FUNCTIONS

ANSI F09		Deadbolt operated by a key from outside and turn from inside turn retracts but does not project deadbolt
ANSI F07		Deadbolt operated by key from outside and turn from inside
ANSI F18		Deadbolt operated by turn from inside only, no trim on other side

IMPORTANT NOTE

If any of our keyed locks are used less cylinder, whether IC or standard, and another manufacturer's cylinder is used in place of the original manufacturer's cylinder, we request that a sample of that product be provided in advance for testing.

