

REFILLABLE RESERVOIR KIT FOR THE SD750 SOAP DISPENSER

#SD751

Installation, Maintenance & Operation Instructions

This refillable reservoir kit allows the use of bulk soaps and other materials in the SD750 Ligature resistant soap dispenser.

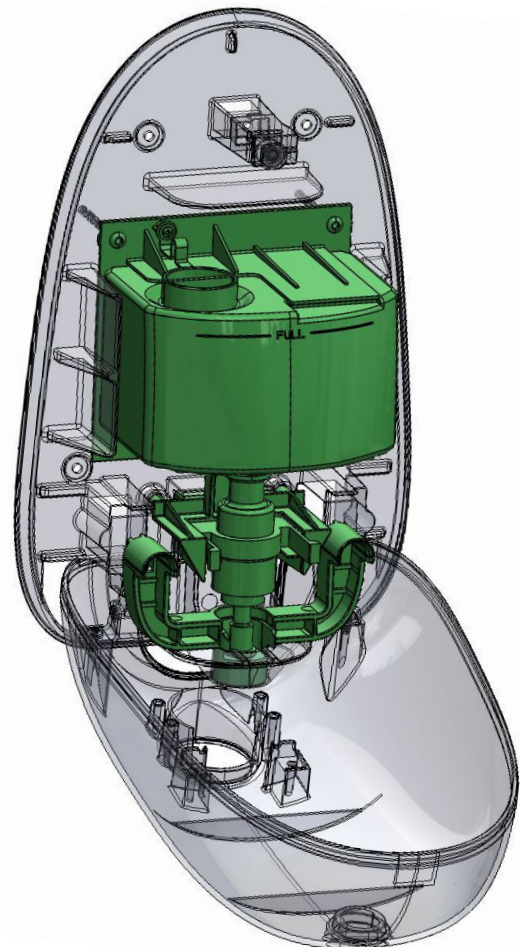
The refillable reservoir design and optional nozzle choices allow for the use of products that can be purchased in bulk quantities. These include soap, shampoo, body wash, foaming soap, and anti-bacterial liquids.

No longer having to purchase dedicated FMX-12 cartridges for the dispenser, reduces cost, is a greener alternative to disposing of the cartridges, and makes a wider variety of products available to your facility.

The kit includes a 750ML reservoir with cap, pump support, Pump yoke, and 2 pumps (soap and liquid) that fit into the SD750 dispenser. *The SD750 dispenser is not included.*

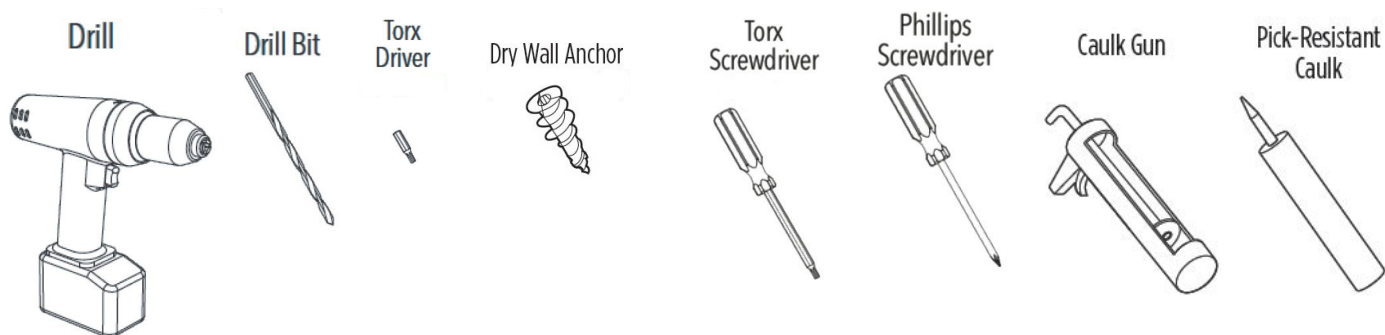
Specifications

- Refillable reservoir design
- 750ML capacity
- Optional nozzle choices for soaps or liquids
- Allows the use of products that can be purchased in bulk
- No dedicated cartridge needed
- Reduced refill cost
- Greener alternative than cartridges





Tools and Supplies



Important

- Be sure to read instructions thoroughly before beginning installation.
- Do not over-tighten any connections or damage may occur.
- Retain this manual for future reference.

Safety Tips

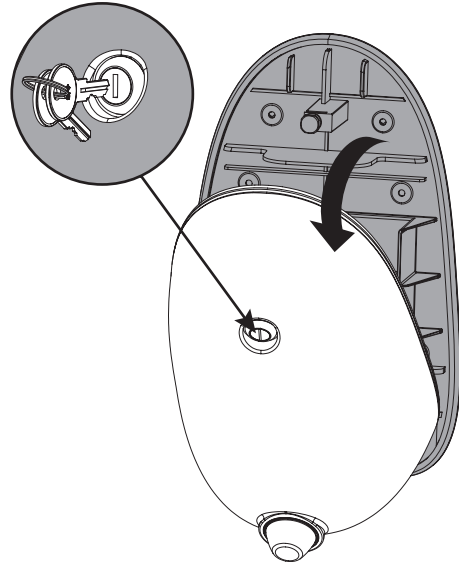
Cover your drain to prevent loss of parts. Be sure to wear eye protection and follow all tool manufacturer's safety recommendations.

Installation Instructions

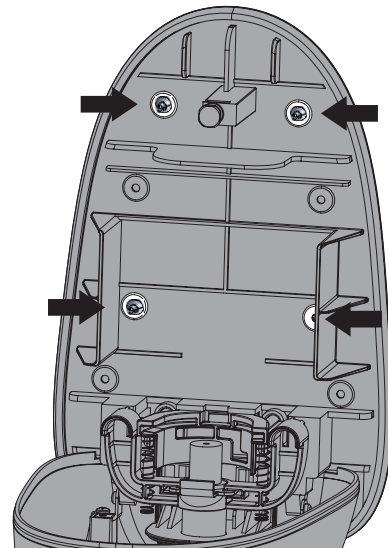
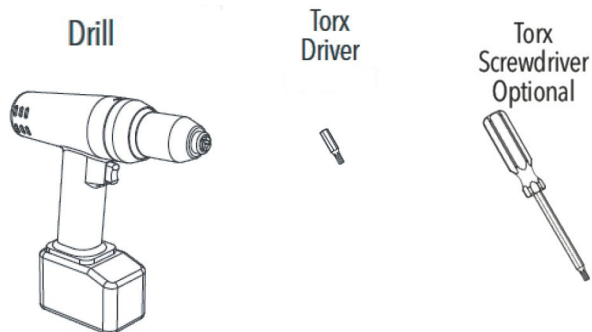
1. Remove any caulk securing the dispenser to the wall. Open the dispenser cover using the Key provided.

Important

Take care not to scratch the powder coating on the dispenser during removal of the caulk, or corrosion may result over time.



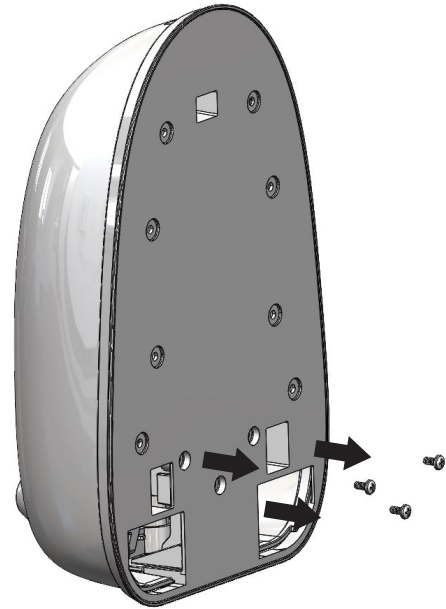
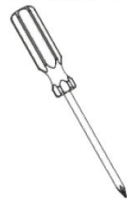
2. Remove the mounting screws attaching the dispenser to the wall and remove the dispenser from the wall.





3. Remove the three screws holding the cartridge support from the back of the dispenser. **Save the screws for future use.**

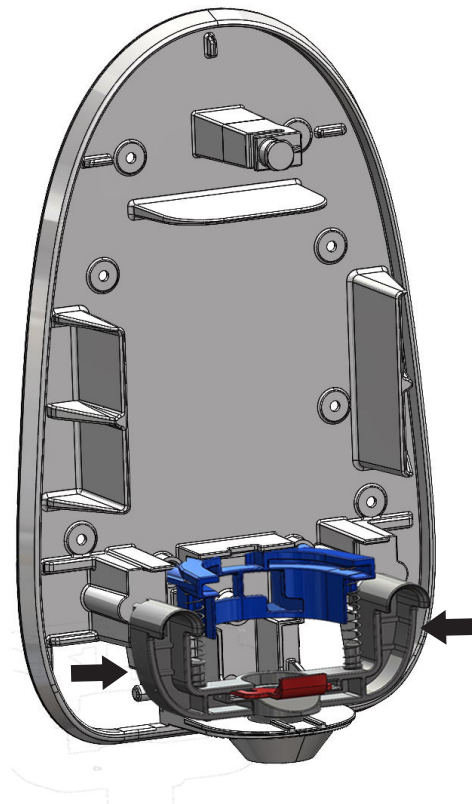
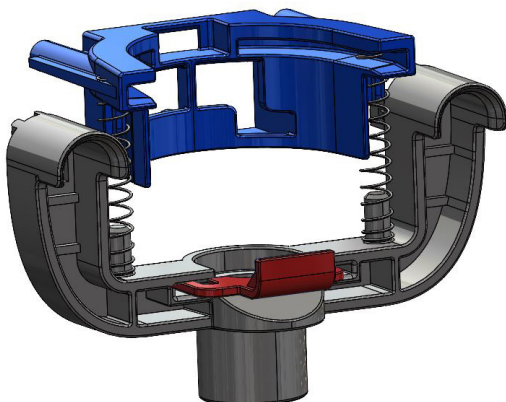
Phillips
Screwdriver



4. Remove and **discard** the cartridge support, cartridge yoke, 2 springs and the cartridge clip. (cover not shown for clarity)

Note

Apply pressure to the sides of the yoke to make removal easier.

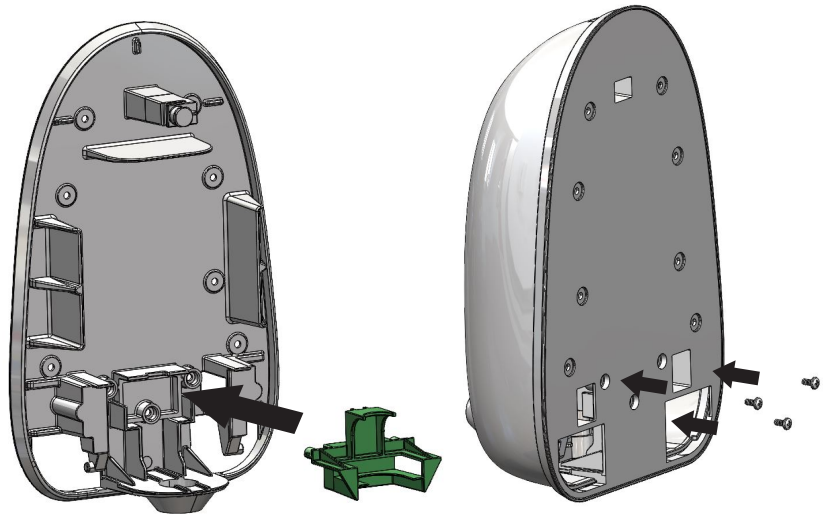
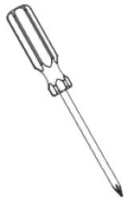




5. Insert the pump support from the kit into the inside of the housing in place of the cartridge support removed in step 4.(cover not shown for clarity)

Reuse the three screws removed the cartridge support in step 3 to attach the pump support to the housing.

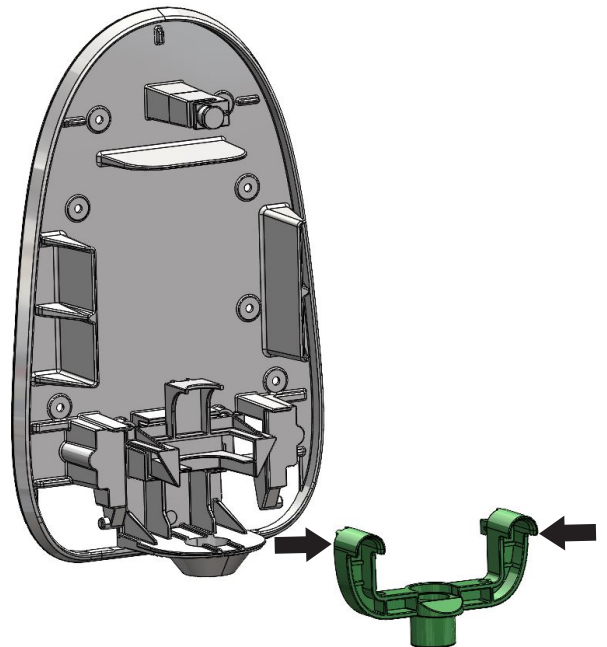
Phillips
Screwdriver



6. Install the new pump yoke from the kit into the housing by inserting the yoke into the opening at the bottom of the dispenser, and clipping it to the dispenser body. Be sure the "hoods" on the top of the yoke face outward as shown. (cover not shown for clarity)

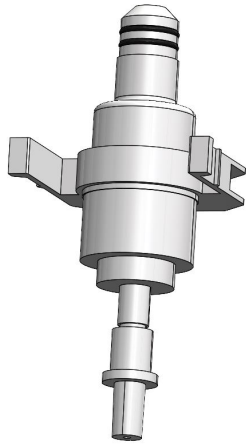
Note

Using gentle pressure on the sides of the yoke will help to engage the clips onto the housing.

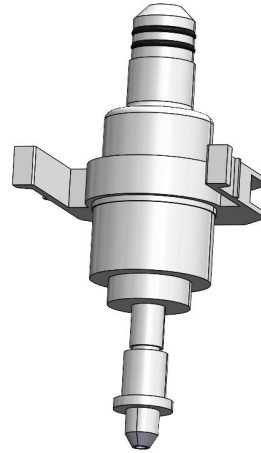


Soap Bottle Assembly

7. Choose which pump you prefer based on the material you want to dispense.



Liquid Sanitizers and Soap

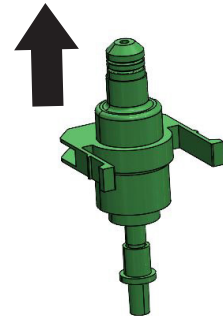
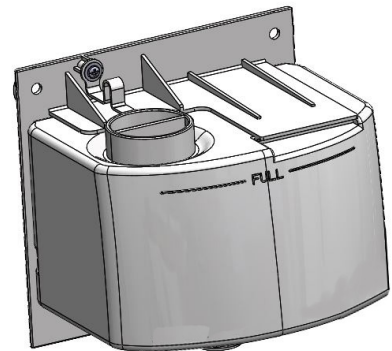


Thicker Soap, Shampoo, etc.

8. Insert the desired pump into the bottom of the reservoir O-rings first as shown, with the full mark on the reservoir, and release tabs on the pump facing forward.

Note

Wetting the O-rings on the top of the pump will ease installation.



Install The Dispenser

9.

Note

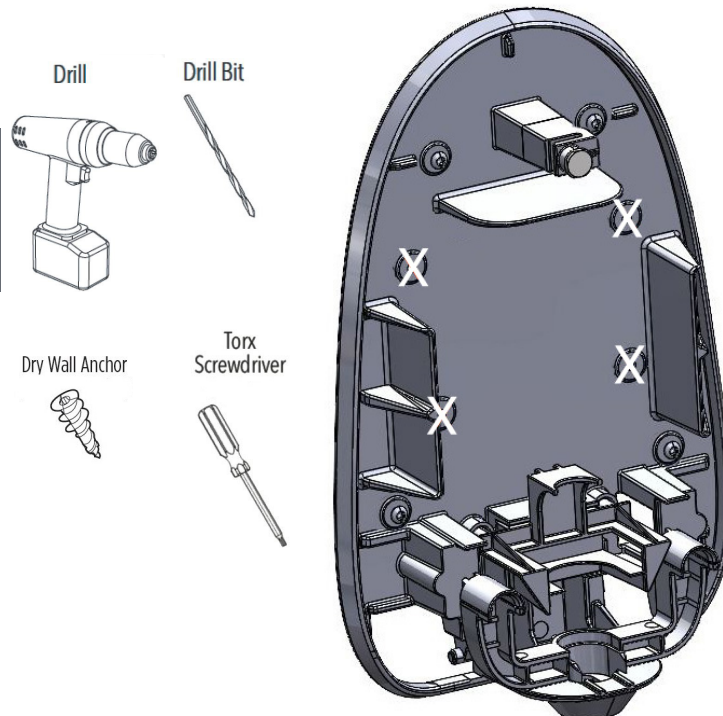
Do not use the holes marked in the picture for mounting the dispenser, as they will be used by the reservoir support.

Remount the dispenser on the wall using a minimum of 4 screws.

If there were no screws in any of the hole locations when the dispenser was removed from the wall, please install screws (and drywall inserts if needed) in those locations.

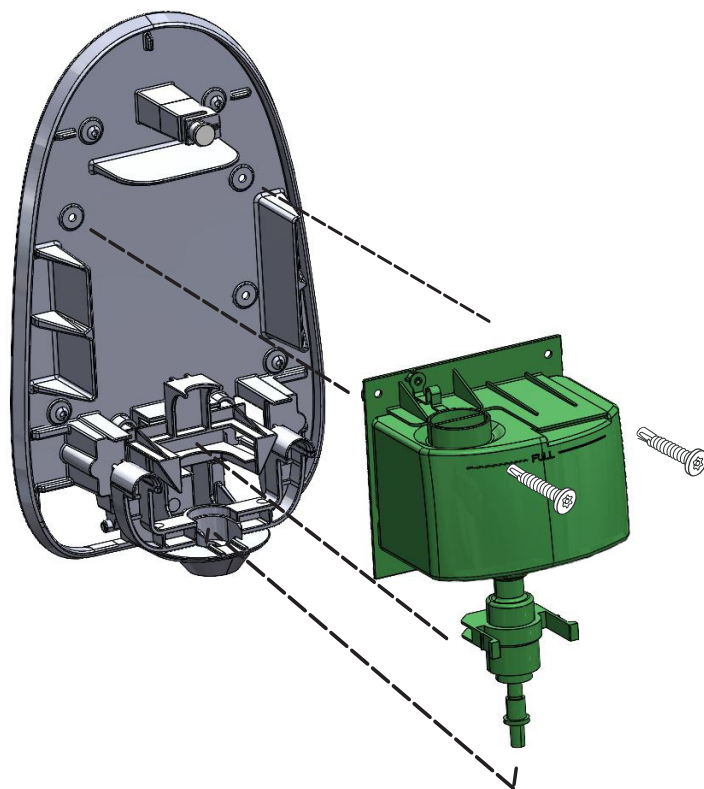
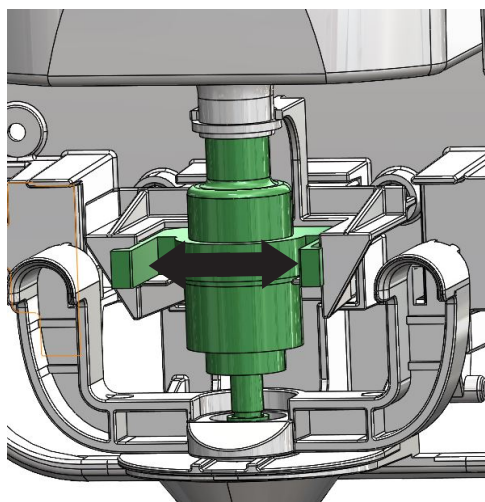
***Use only hand tools to install the screws.
Do not over-tighten the screws or
damage may result.***

(cover not shown for clarity)



Soap Bottle Installation

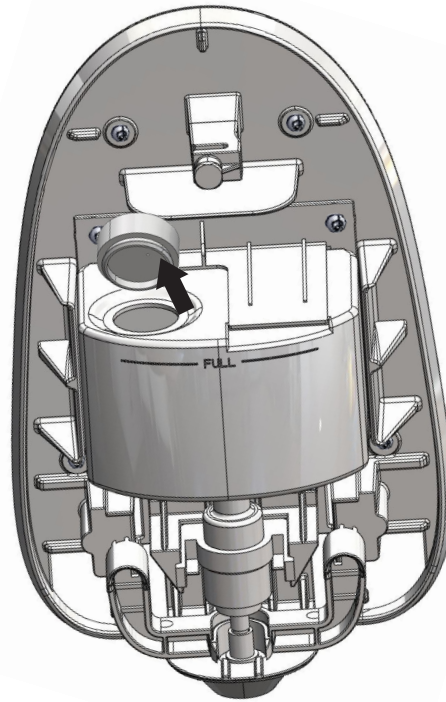
10. While supporting the reservoir, allow the pump nipple to drop into the yoke hole from above, and guide the pump release tabs into the pump support. Push the reservoir into place and clip the pump into the support. Press outward on the release tabs to lock the pump in place. Add the 2 screws at the top of the reservoir to secure it to the wall.
(cover not shown for clarity)





11. Open the reservoir cap and fill the dispenser to the FULL line.

Replace the cap onto the reservoir, and wipe any excess or spilled material after the filling process.
(cover not shown for clarity)

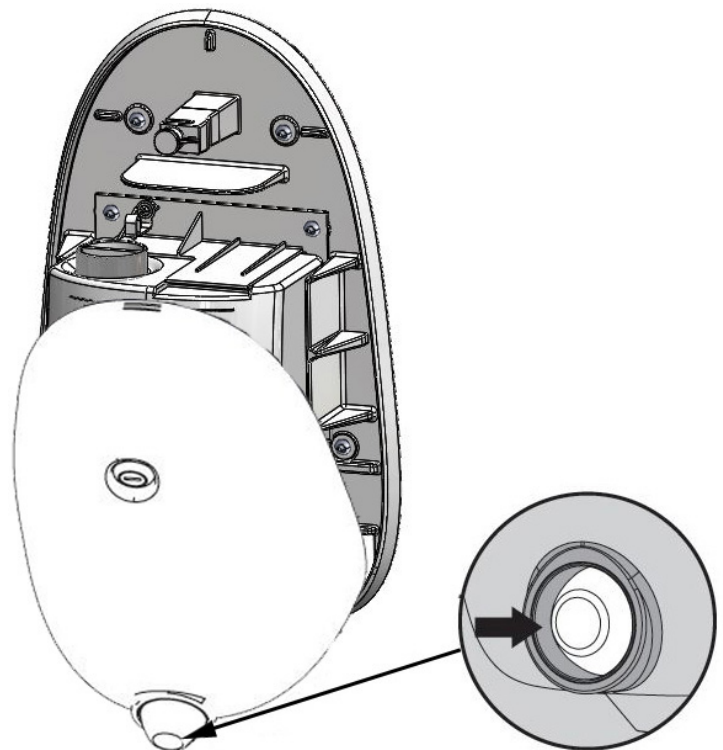


12. Close the dispenser cover and lock with the key. Push the button to activate the soap. (You may have to push several times to prime the pump)

Recalk the perimeter of the dispenser to the wall with pick resistant caulk.

Caulk Gun

Pick-Resistant
Caulk



Important

If the dispenser is installed in a shower, we recommend lubrication of the lock on a monthly basis, to avoid corrosion in the lock mechanism.

Troubleshoot

If no soap is dispensed as you push the button:

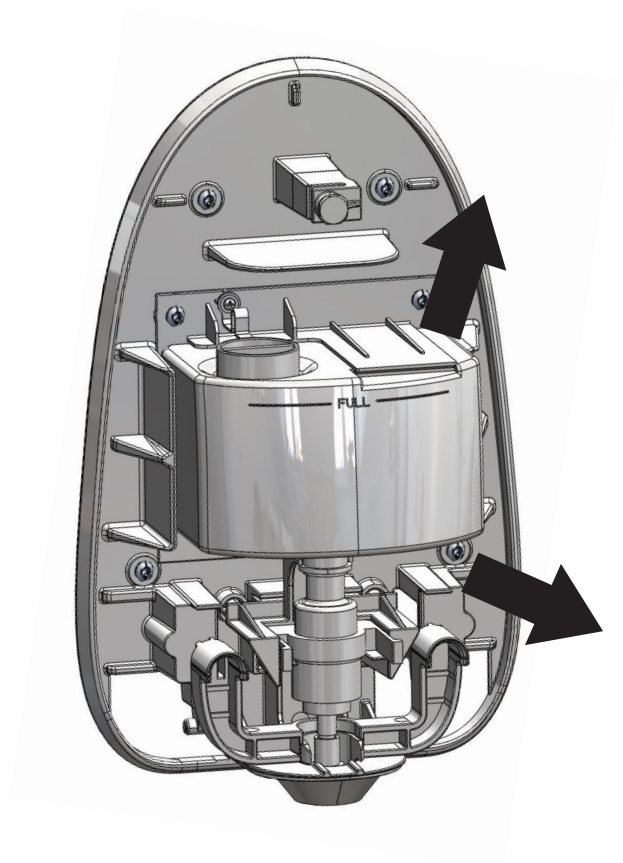
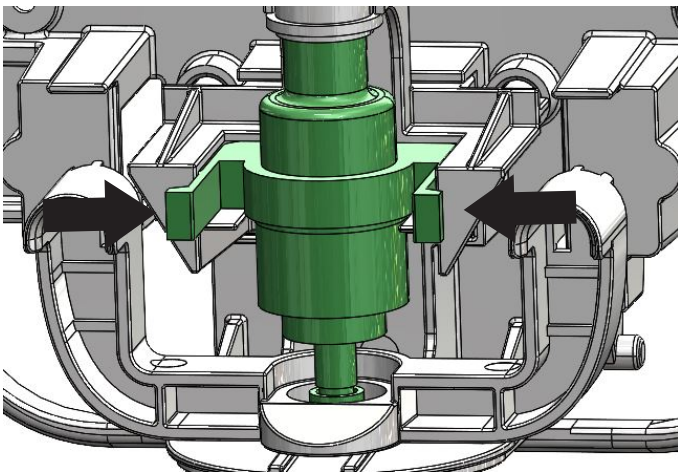
1. Check to see that the reservoir has soap in it.
2. Check to see that you have installed the correct pump for the material you are using.

Changing the pump

If you need to change the pump, there is no need to remove the dispenser from the wall.

1. Open the cover and lift the tab at the top to release the reservoir. Squeeze the pump release tabs while rotating the pump/reservoir forward and lift the pump reservoir assembly out of the dispenser.
2. Pull the pump out of the bottom of the reservoir and refer to the information on page 6.
3. Reverse the procedure in step 1 for reassembly.

(cover not shown for clarity)



Care & Cleaning

Your new Product is designed for years of trouble-free performance. Keep it looking new by cleaning it periodically with a soft cloth and mild soap. The use of harsh chemicals and abrasives on any of the custom finish products may damage the finish and void the product warranty. Please be sure to only use approved cleaners.

Important

If the dispenser is installed in a shower, we recommend lubrication of the lock on a monthly basis, to avoid corrosion in the lock mechanism.

Waiver & Disclaimer

This waiver-disclaimer is attached to and made a part of the written contract to purchase these products for use in psychiatric and correctional facilities. Such fixtures and products are purchased to reduce the risk of self-imposed death or injury to patients or clients in such facilities, but are NOT represented as able to prevent such death or injury.

Behavioral Safety Products, LLC ("BSP") has not, and will not represent or warrant to the purchaser shown in this contract ("Purchaser") that its fixtures and products will prevent death or injury in any case whatsoever.

BSP makes no express or implied warranty with respect to the preventative quality of its products, but merely represents that the use of such products tends to reduce deaths and injuries by patients or clients who are subject to meticulous screening processes and diligent supervision on the part of the facility housing them.

Purchaser acknowledges the foregoing disclaimer and waives any and all claims against BSP and Speakman Company as to express or implied warranties of fitness for any purpose whatsoever.