



# BEHAVIORAL SAFETY

## INNOVATION NEVER RESTS

## LIGATURE RESISTANT METERING FAUCET

#SF380

### Installation, Maintenance & Operation Instructions

Our patented metering faucet's ligature resistant profile is patterned after our popular sensor faucet, but now includes the patient having the option of hot or cold water. Duration of flow can be adjusted to change run time depending on each environmental condition. With no batteries or electronics, maintenance on this unit has been drastically reduced. Hot and cold buttons are color coded and incorporate braille. All metal construction designed for maximum strength and protection from abuse. Polished chrome finish.

### Specifications

- All metal housing designed for maximum strength and protection from abuse with a polished chrome finish.
- Mechanical metering cartridge provides a predetermined runtime of water flow.
- Fits both a standard 4" centerset and an 8" centerset with our optional conversion kit assembly.
- Spray outlet along with preset cartridge time provides 0.25 gal /cycle meeting typical plumbing code requirements.
- Faucet inlets include check valves for cross flow protection.
- Faucet inlets include screens to prevent debris from damaging cartridges.
- Weep holes in front of unit to allow easy draining any internal water.
- Color coded buttons for easily recognizable operation.
- Braille included on button indicating hot or cold.
- Tamper resistant screws require special tooling (T25 Pin in Torx) for access.
- Above counter access for easy timing adjustment of metering cartridges.
- 3/8" compression inlets allow for easy connection using standard hoses.
- Can be optionally fitted with an ASME 1070 thermostatic valve for the hot supply.
- Pre-assembled for simple installation.
- Includes a 0.5 GPM Boca outlet with key – spray/non-aerating
- This faucet has an operating range of 20-80psi
- Inlet Supplies: 3/8" compression with male threads
- Flow Rate: 0.25 gal /cycle meeting typical plumbing code requirements.
- Operating static water pressure of 20psi to 80psi
- Zinc Chrome Plated Finish



### Certifications

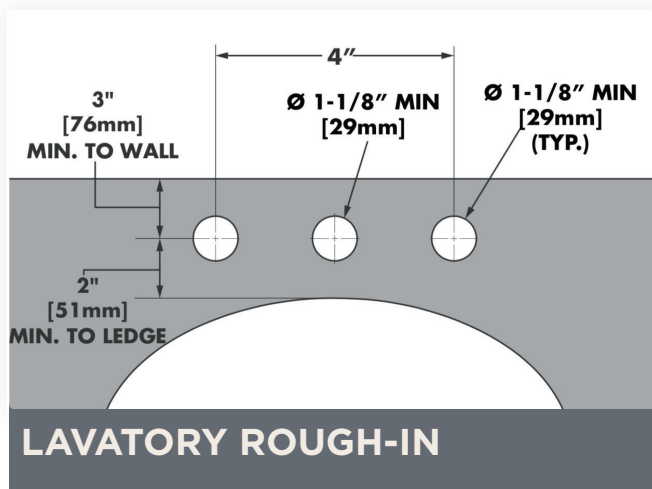
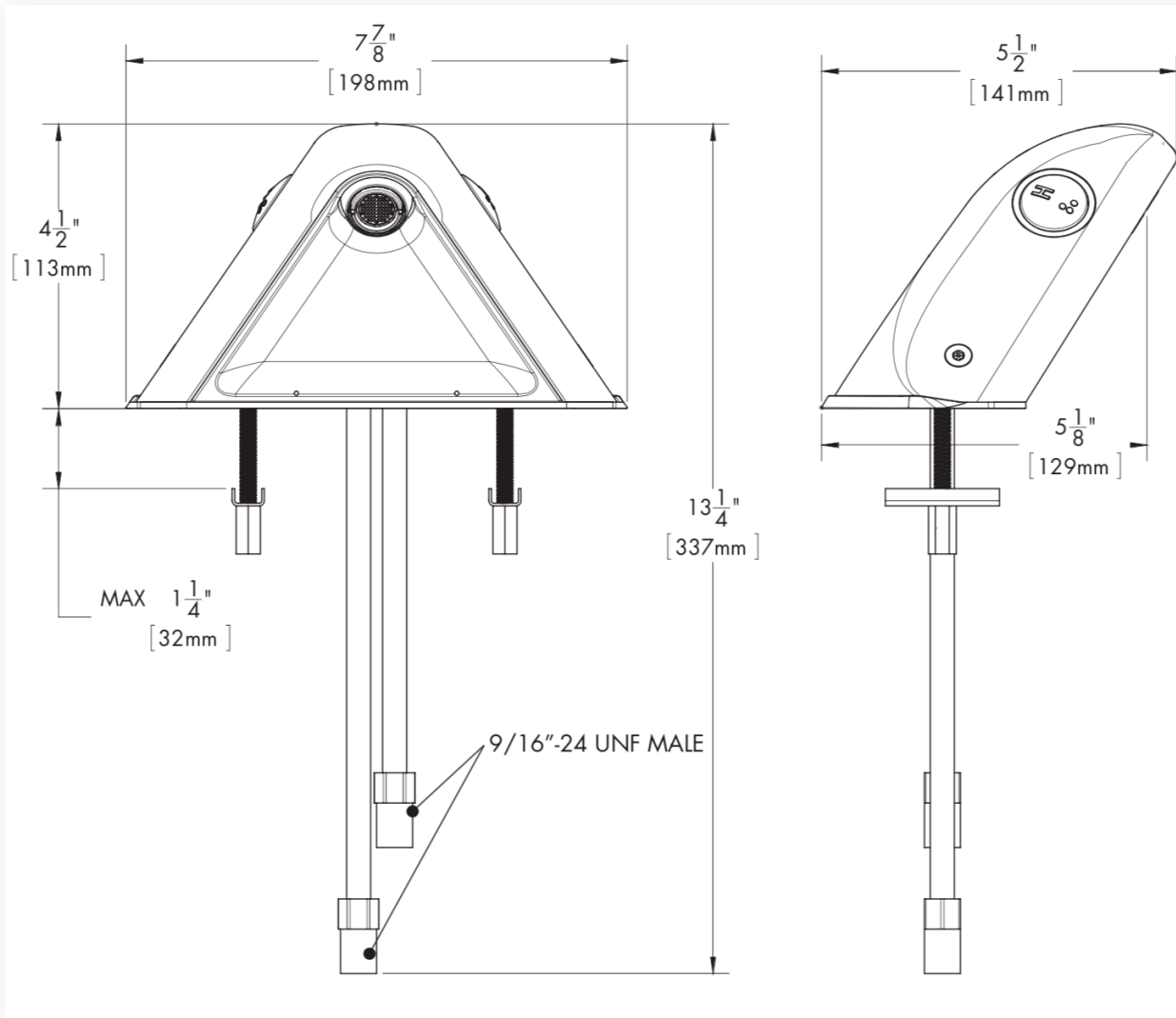
- This product meets: CA AB1953, NSF 372, UPC, ASME A112.18.1, ADA
- ADA compliant.
- This product is certified by IAPMO to meet: UPC, ASME A112.18.1/ CSA B125, AB 1953 California and National low-lead requirements.
- Gold Seal of Approval in the NYS Office of Mental Health
- Patient Safety Standards, Materials and Systems Guidelines.
- Approved in the FGI Design Guide for the Built Environment of Behavioral Health Facilities.

### Options

**(See accessories on BSP website)**

- TMV—UC Thermostatic Lead-Free Valve with check valves (SF372)
- 8" Cover Plate (SF373) - Converts 8" to 4" O.C.

## Rough In Dimensions



**Caution:** Some sinks may not be manufactured according to industry standards and may not work with this faucet. The mounting surface of deck shall have a minimum flat surface area of 4" by 8" as shown in feature.

## Installation Instructions

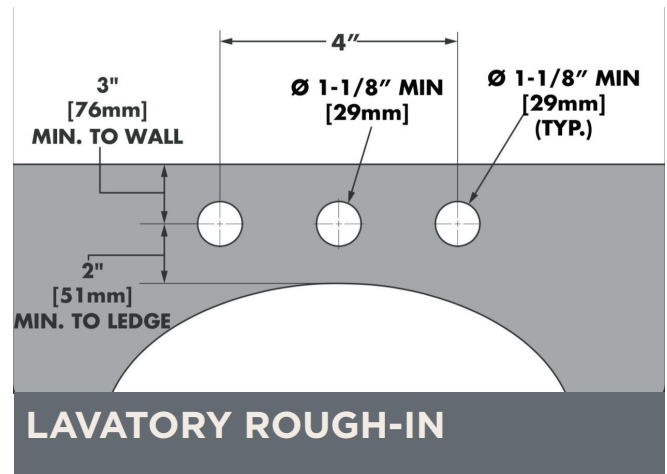
### IMPORTANT

- Do not over-tighten any connections or damage may occur.
- Be sure to read instructions thoroughly before beginning installation.
- This fixture must be mounted with its back to a wall.
- It is unsafe if unit could be accessed from the back side.
- All plumbing connections under the sink are not ligature resistant and should be in a separate enclosure or cabinet (not supplied).

### Tools And Supplies:



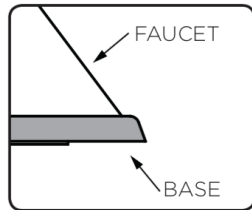
1. A sink top with 4" on center holes (outer hole centerline to outer hole centerline) is required for proper installation. If you are mounting to a sink top with 8" on center holes, you will need to drill holes on a 4" center. The existing 8" on center holes will need to be plugged with screw caps to prevent tampering. An optional 8" cover-plate is available (SF373). Ensure that there is a minimum of 3" from the centerline of the holes to the back wall or back of sink.



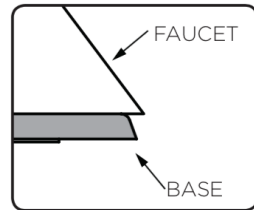
**Caution:** Some sinks may not be manufactured according to industry standards and may not work with this faucet. The mounting surface of deck shall have a minimum flat surface area of 4" by 8" as shown in feature.

2. Shut off water supplies. Remove old faucet. Clean mounting surface in preparation for installation of new Faucet. Place faucet supply lines through base gasket, and guide them through hole in mounting surface. Place faucet and base gasket into final mounting position, being sure the mounting gasket is perfectly flush to the mounting surface.

**CORRECT ✓**

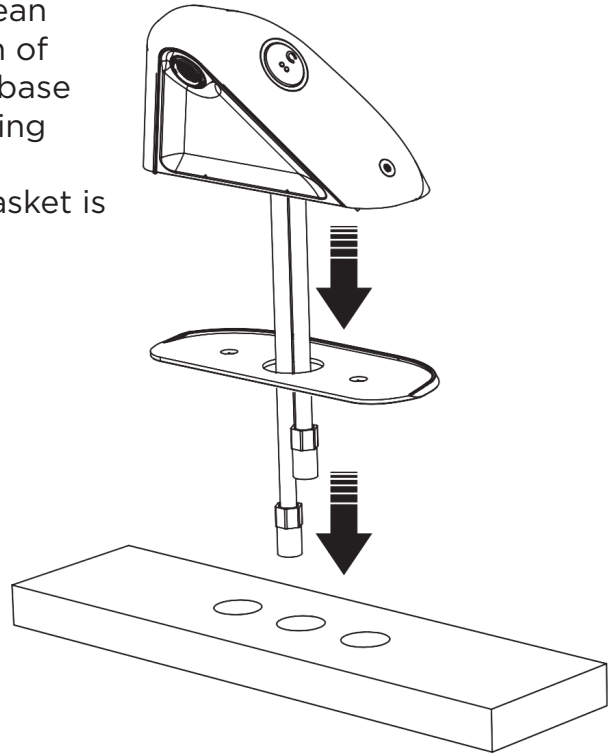


**INCORRECT ✗**

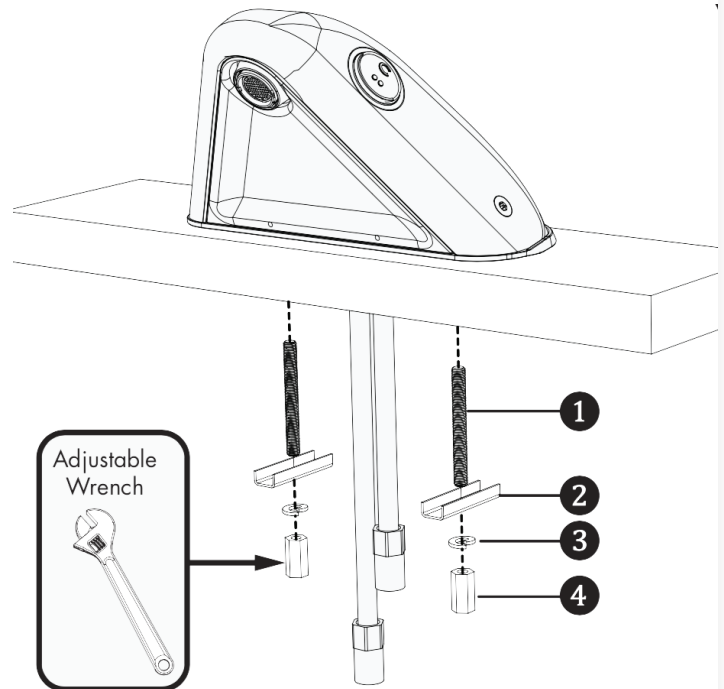


**IMPORTANT!**

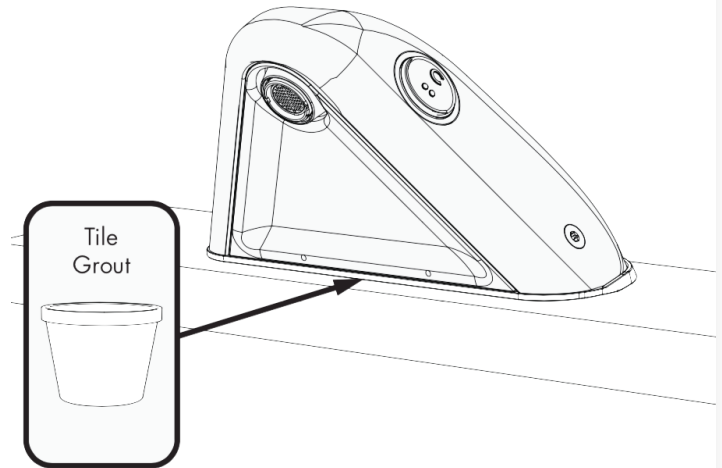
When tightening down the faucet be certain the rear of the faucet is fully resting on the rubber base and does not overlap the rubber base gasket.



3. Thread Mounting Studs (1) into base of faucet. Slide Retaining Washers (2) and Lock Washers (3) over mounting stud, and secure Faucet to counter with Mounting Nuts (4).

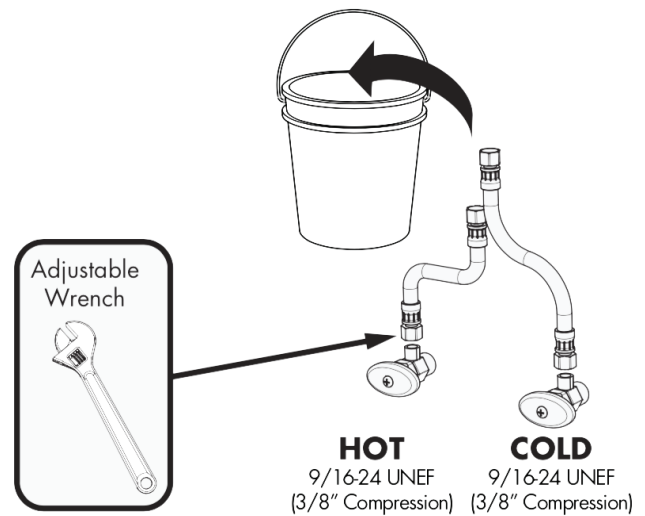


4. Inspect area between the base of the faucet and the mounting surface. If any gaps remain after tightening faucet, fill them with tile grout.



5. Make flexible hose connections to supply valves. Inlet supply flexible hoses and valve stops are not included. Place free ends of hoses into a bucket. Turn on water supplies for one (1) minute to flush debris from the system.

**INLET SUPPLIES NOT INCLUDED**



### **IMPORTANT**

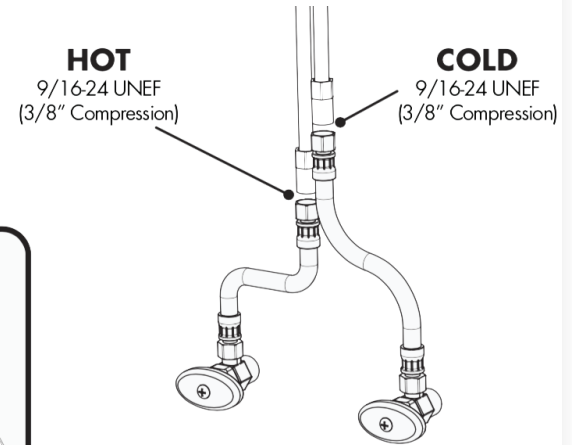
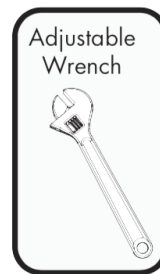
Metering Faucets are very sensitive to impurities within a water supply that may lead to poor performance or malfunction.

This faucet's two copper Inlet Tubes contain Mesh Screen Filters. These filters should be cleaned periodically to prevent clogging of the filters and cause poor performance of the faucet.

If you are in an area with poor water quality, it is recommended to install a secondary in-line filtration system. This in-line filtration system should be installed upstream (before) the inlets of the Metering Faucet.

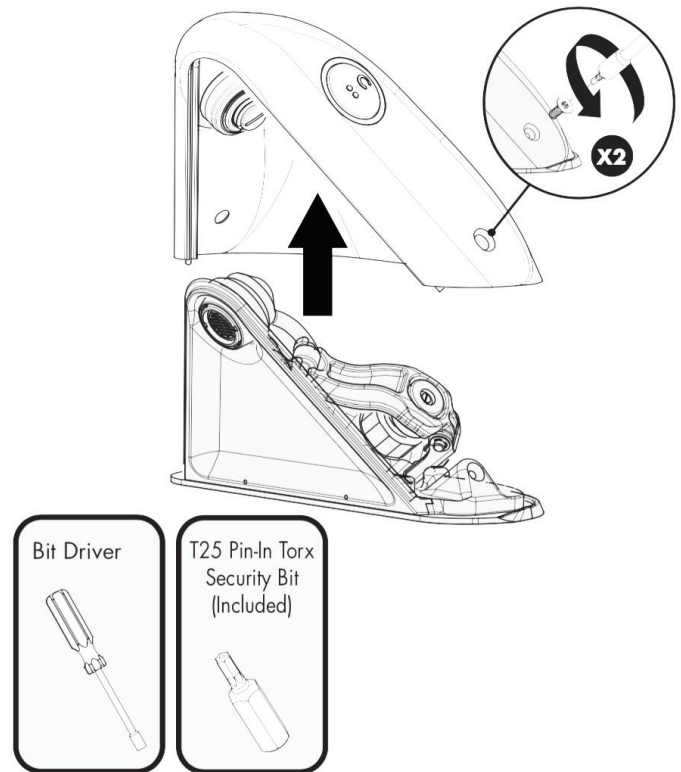
6. Make connections to water supplies. The inlet threads of the faucet are 9/16"-24 UNF and will accept a 3/8" Compression Fitting. Apply Thread Seal Tape to the threads of the inlet tubes. Your COLD water supply should be connected to the shorter inlet tube, and the HOT water supply to the longer inlet tube. Wrench Tighten.

**INLET SUPPLIES NOT INCLUDED**



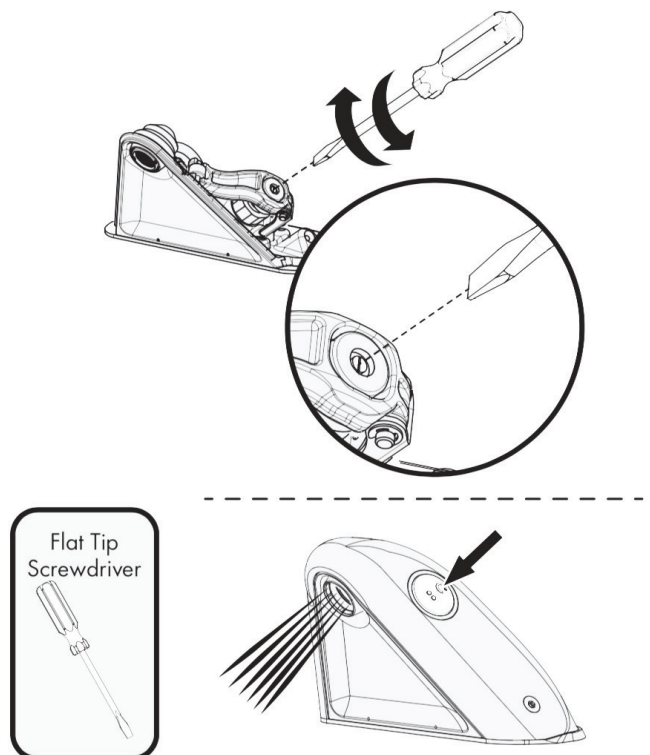
## Timing Adjustment

1. The spray timing is pre-adjusted at the factory. However, due to different field conditions, this adjustment may need to be modified at the time of installation. Begin by removing the two (2) Pin In Torx Screws from the cover using the supplied T25 Pin In Torx bit in conjunction with a Bit Driver. Remove cover assembly from faucet and place aside.



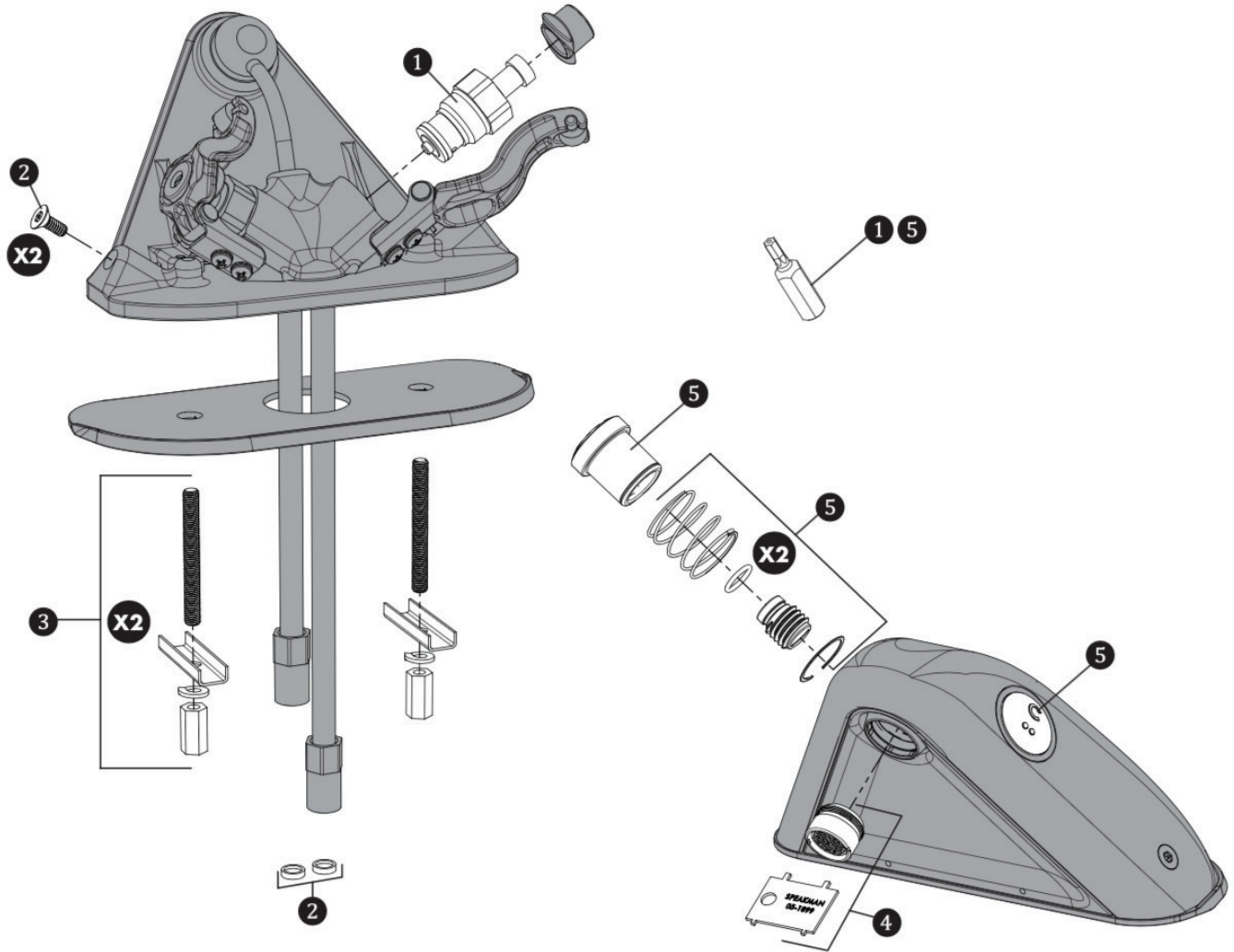
2. Using a Flat Tip Screwdriver, either thread in or out the end screw of each metering cartridge to adjust the duration of the spray timing. **IMPORTANT: Do NOT screw more than 1 complete rotation in either direction or damage may occur.** Replace cover and press activation button to test spray duration. Once proper timing is achieved replace and secure the cover assembly to the faucet.

1/4 CLOCKWISE = INCREASE RUN TIME  
1/4 COUNTER CLOCKWISE = DECREASE RUN TIME





## Repair / Replacement Parts



Item	Part No.	Description
1	RPG05-0932	REPLACEMENT METERING CARTRIDGE
2	RPG48-0048	INLET FILTER SCREENS (2) AND VANDAL RESISTANT SCREWS
3	RPG66-0193	MOUNTING HARDWARE
4	RPG38-0128-PC	METERING SPRAY OUTLET 13/16"-27
5	RPG48-0047	REPLACEMENT ACTIVATION BUTTON ASSEMBLIES (BOTH HOT & COLD)



## CARE & CLEANING PAGE

- Your faucet is designed and engineered in accordance with the highest quality and performance standards. With proper care, it will provide years of hygienic and trouble-free service.
- The polished chrome finish of your faucet should be cleaned using mild soap and warm water.
- Dry immediately with a soft, clean cloth for best results.
- NEVER use abrasive cleaners, chemicals, alcohol or other solvents. They may damage the surfaces of the non-chrome plated finishes.

## WAIVER & DISCLAIMER

This waiver-disclaimer is attached to and made a part of the written contract to purchase these products for use in psychiatric and correctional facilities. Such fixtures and products are purchased to reduce the risk of self-imposed death or injury to patients or clients in such facilities, but are NOT represented as able to prevent such death or injury.

Behavioral Safety Products, LLC (“BSP”) as the seller and Speakman Company as the manufacturer of these products have not, and will not represent or warrant to the purchaser shown in this contract (“Purchaser”) that its fixtures and products will prevent death or injury in any case whatsoever.

BSP and Speakman Company make no express or implied warranty with respect to the preventative quality of its products, but merely represents that the use of such products tends to reduce deaths and injuries by patients or clients who are subject to meticulous screening processes and diligent supervision on the part of the facility housing them.

Purchaser acknowledges the foregoing disclaimer and waives any and all claims against BSP and Speakman Company as to express or implied warranties of fitness for any purpose whatsoever.

### Important

This fixture must be mounted with its back to a wall.

It is unsafe if unit could be accessed from the back side.

All plumbing connections under the sink are not ligature resistant and should be in a separate enclosure or cabinet (not supplied).