

LIGATURE RESISTANT TOILET PAPER HOLDER

#TR740

Installation, Maintenance & Operation Instructions

This recessed toilet paper holder reduces ligature risk normally associated with standard TP holders while accepting a standard size roll. The spring-loaded holders allow the roll to be installed easily and then permit the roll to move freely once installed. This design improves the sanitary conditions by reducing the amount of handling of the roll. Combination surface/recess mount for ease of installation with the recessed holes accepting fasteners appropriate for the structure behind the unit. Designed to fit existing 4" cavity over drywall. Composed of stainless steel with exposed surfaces in a powder coated white finish. All corners are welded, ground, and pre-drilled for mounting. Dimensions are 7-7/8" W x 8-5/16"H flange and 3-3/4"D.

Specifications

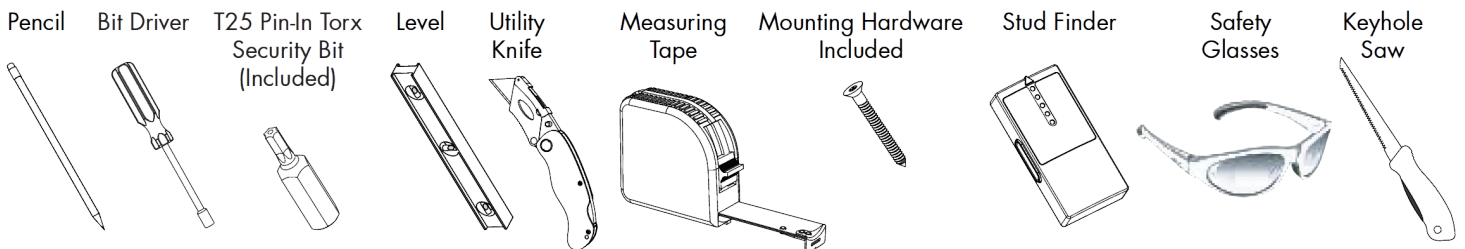
- Stainless steel construction.
- Spring-loaded holder construction for toilet paper ease of release or install.
- White powder coat exterior.
- Mounted from front of wall.
- Flanged edge for uniform mounting.
- Unit secured with tamper resistant stainless steel screws.
- Fits standard 4" toilet paper roll.

Important

- Do not over-tighten any connections or damage may occur.
- Be sure to read instructions thoroughly before beginning installation.



Tools and Supplies



Care & Cleaning

Your new Product is designed for years of trouble-free performance. Keep it looking new by cleaning it periodically with a soft cloth. The use of harsh chemicals and abrasives on any of the custom finish products may damage the finish and void the product warranty. Please be sure to only use approved cleaners.

Waiver & Disclaimer

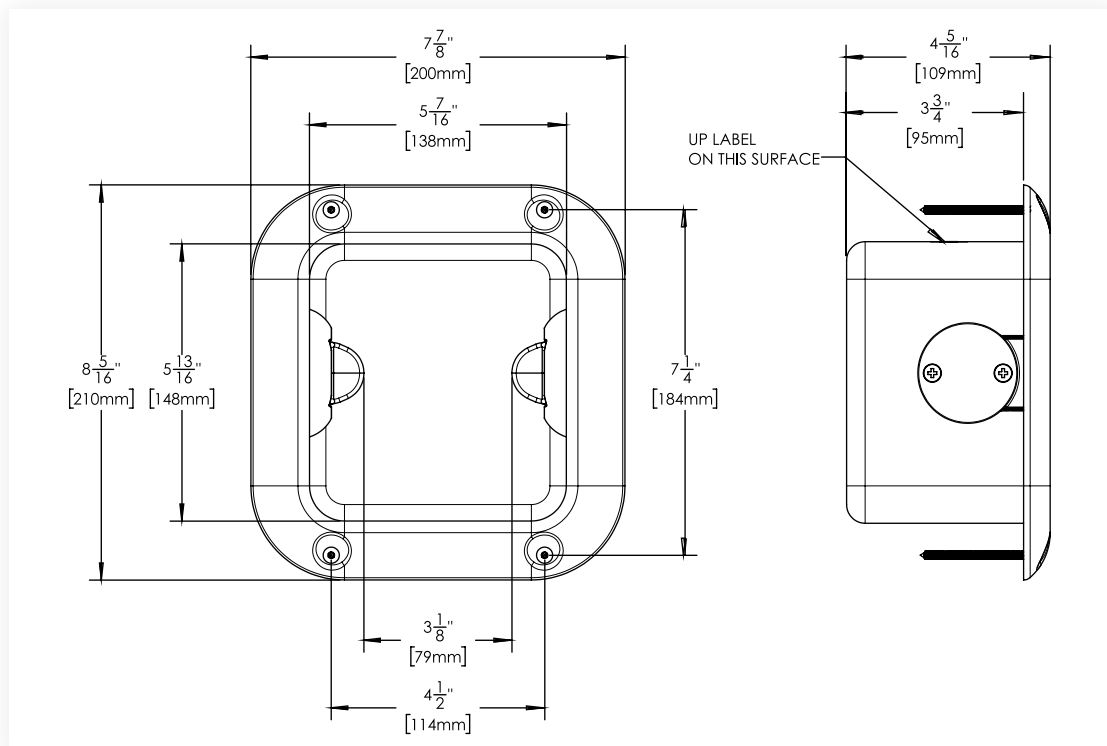
This waiver-disclaimer is attached to and made a part of the written contract to purchase these products for use in psychiatric and correctional facilities. Such fixtures and products are purchased to reduce the risk of self-imposed death or injury to patients or clients in such facilities, but are NOT represented as able to prevent such death or injury.

Behavioral Safety Products, LLC ("BSP") as the seller and Speakman Company as the manufacturer of these products have not, and will not represent or warrant to the purchaser shown in this contract ("Purchaser") that its fixtures and products will prevent death or injury in any case whatsoever.

BSP and Speakman Company make no express or implied warranty with respect to the preventative quality of its products, but merely represents that the use of such products tends to reduce deaths and injuries by patients or clients who are subject to meticulous screening processes and diligent supervision on the part of the facility housing them.

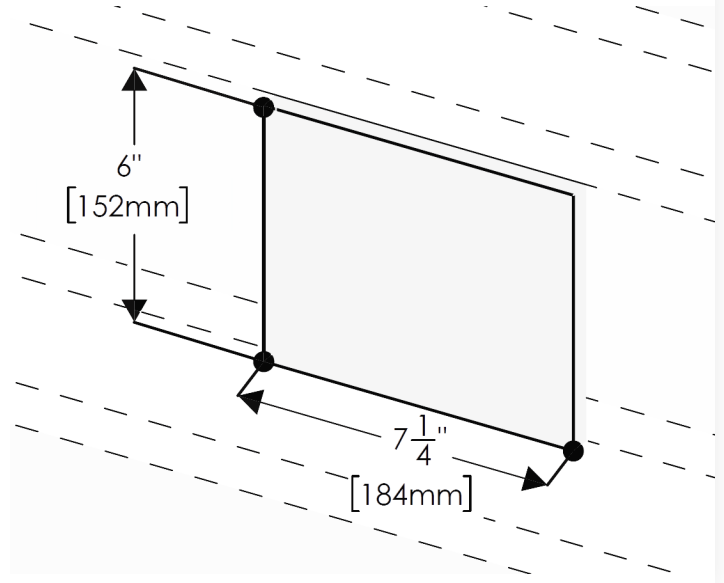
Purchaser acknowledges the foregoing disclaimer and waives any and all claims against BSP and Speakman Company as to express or implied warranties of fitness for any purpose whatsoever.

Rough In Dimensions

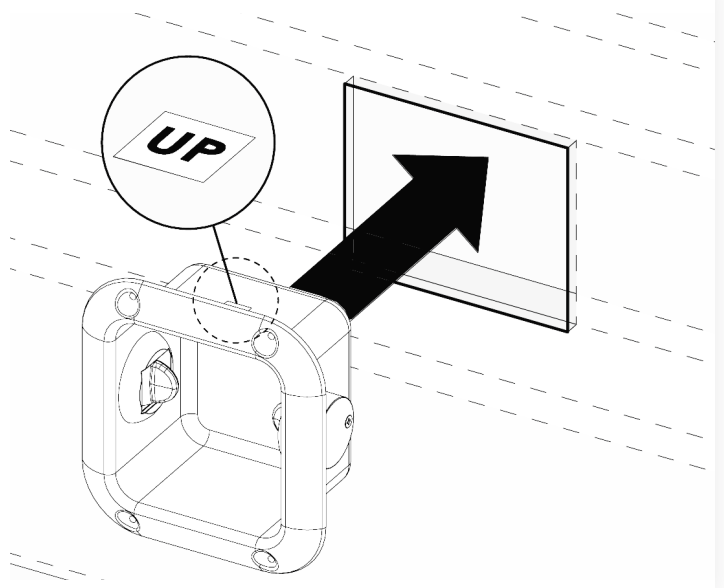


Installation Instructions

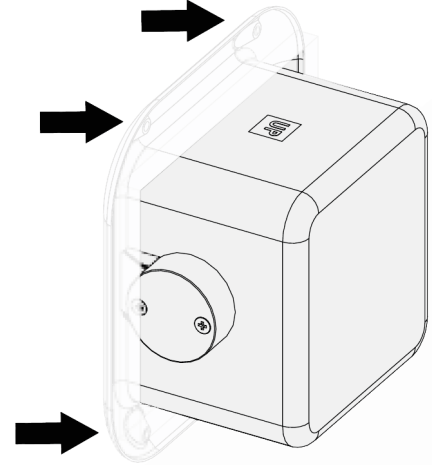
1. Determine desired mounting position of the recessed Ligature Resistant Toilet Paper Holder. Ensure mounting location is capable of supporting the product in use. Ensure proper mounting structure is present within the wall cavity. Measure and cut out wall opening using appropriate tools.



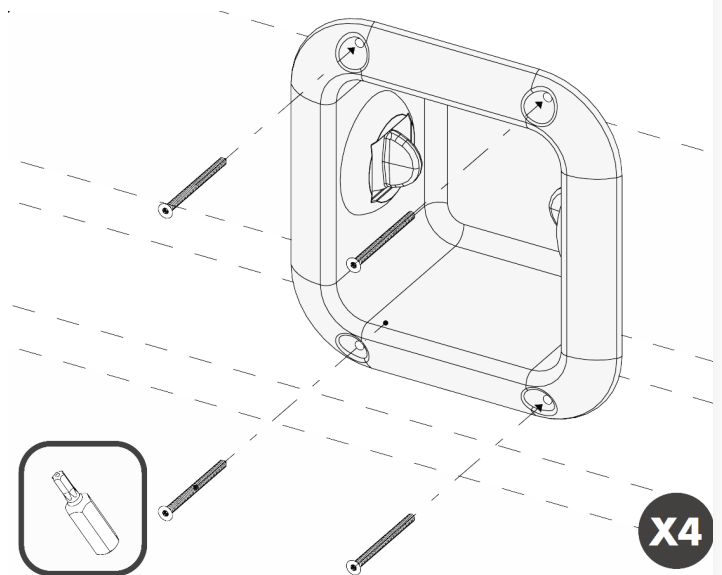
2. Orient the Ligature Resistant Toilet Paper Holder so the surface marked "UP" is facing upward. Insert the Ligature Resistant Toilet Paper Holder in the rough in opening. Make sure it is level. If it doesn't fit, adjust the hole opening.



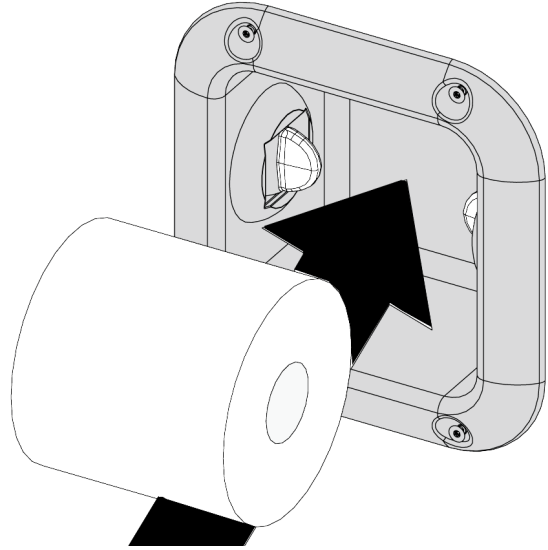
3. If mounting to structure other than wood bracing, acquire appropriate hardware capable of supporting the product during its intended use.



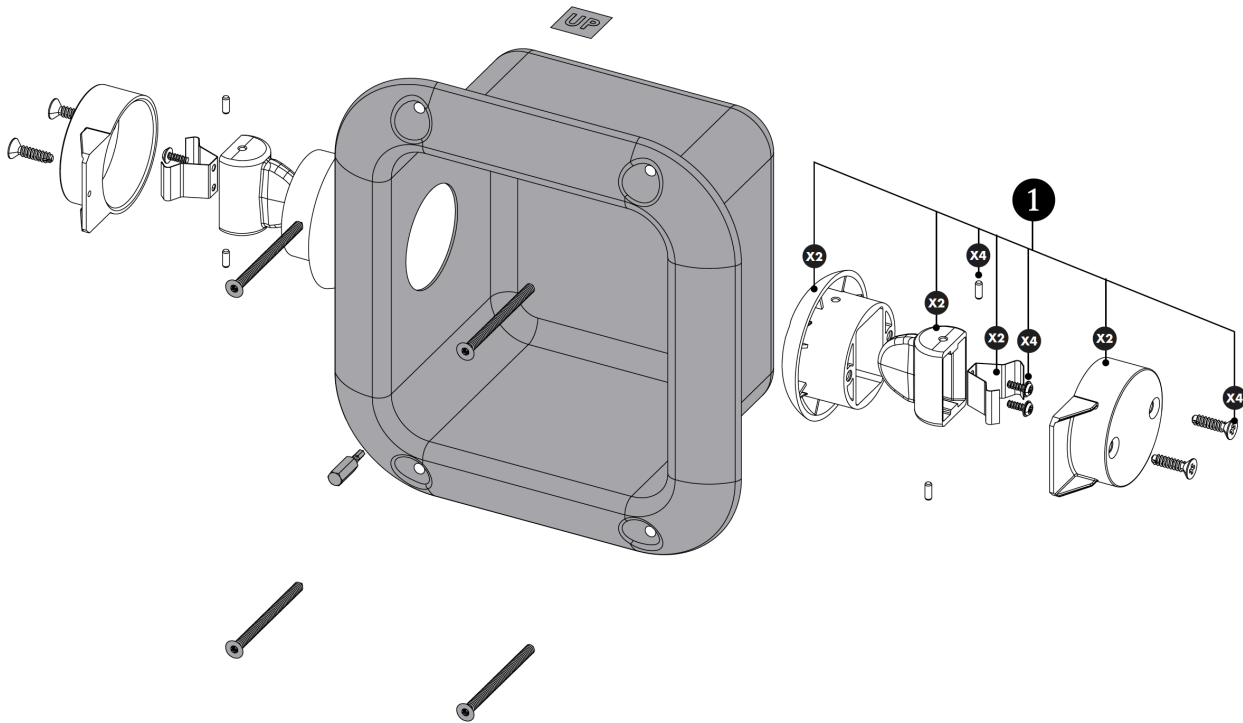
4. Install supplied Mounting Hardware through the four (4) mounting locations using the supplied Torx Bit tool into a secure brace (supplied by installer) or into wall. This will support the Ligature Resistant Toilet Paper Holder. Ensure the mounting structure and mounting hardware can safely support the product in use.



5. Insert 4" Toilet Paper Roll by pushing in the Roll.



Repair / Replacement Parts



Item	Part No.	Description
1	RPG05-111965	TR740 REPAIR PARTS